



GAT MONTHLY MEMBERSHIP PROGRESS REPORT

Results as of: 9/30/2022

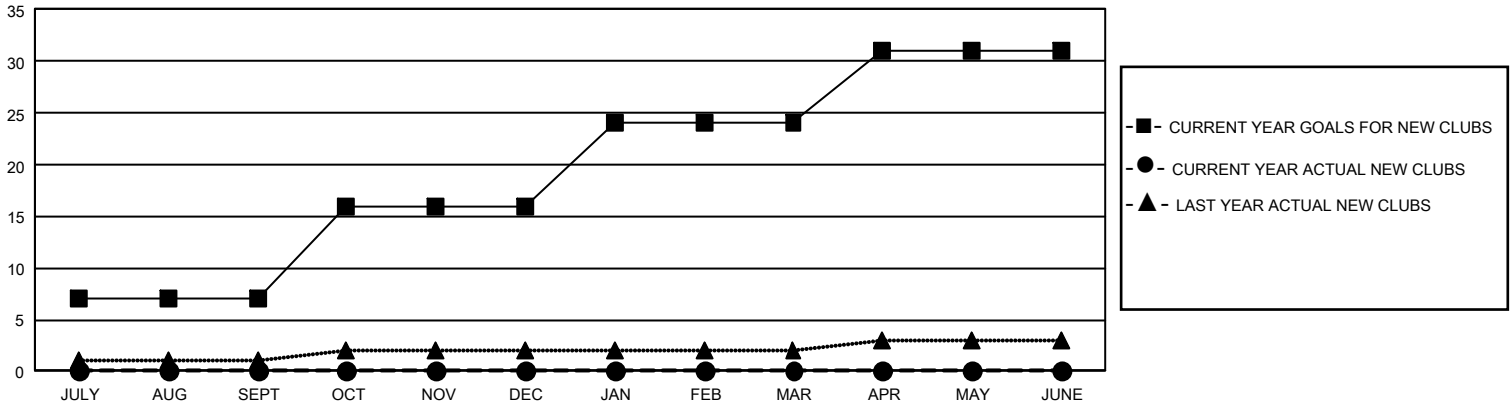
GMT Constitutional Area 1, Group J

REPORT DOES NOT INCLUDE CLUBS IN UNDISTRICTED AREAS.

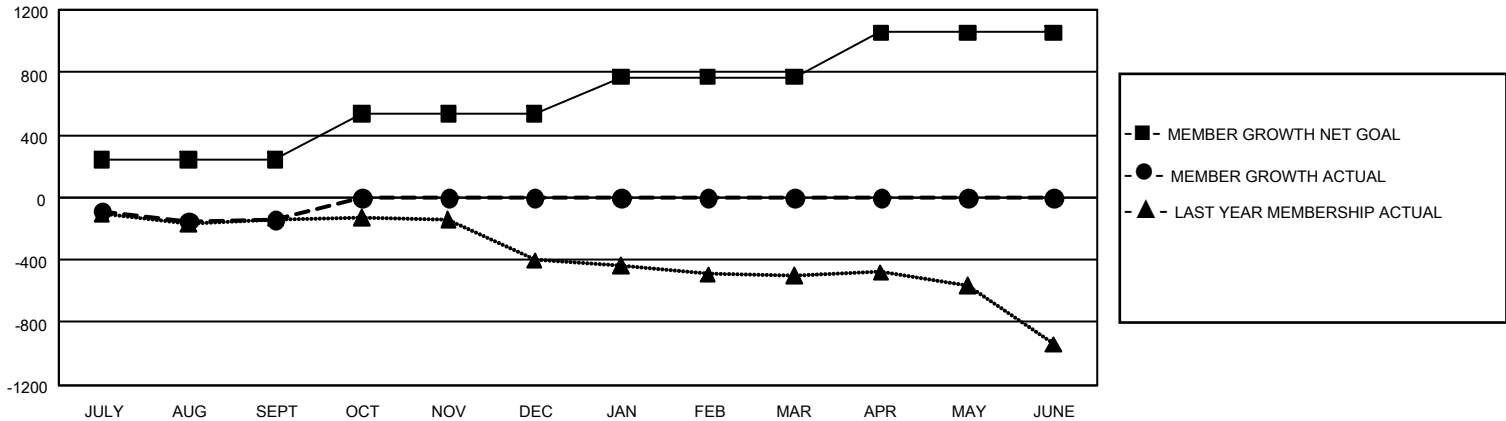
Clubs			
RESULTS FOR 2022-2023			
QUARTER	NEW CLUB GOAL	NEW CLUBS	DROPPED CLUBS
JULY/AUG/SEPT	21	0	5
OCT/NOV/DEC	27	0	0
JAN/FEB/MAR	24	0	0
APR/MAY/JUNE	21	0	0

Members			
RESULTS FOR 2022-2023			
QUARTER	MEMBER GROWTH NET GOAL	MEMBER GROWTH ACTUAL	DROPPED MEMBERS ACTUAL (including transfers)
JULY/AUG/SEPT	241	420	522
OCT/NOV/DEC	297	0	0
JAN/FEB/MAR	231	0	0
APR/MAY/JUNE	287	0	0

GOALS AND ACTUAL NEW CLUBS CUMULATIVE



GOALS AND ACTUAL MEMBERS CUMULATIVE



DROPPED CLUBS: 5	201 CLUBS OF 895 ADDED 1 OR MORE NEW MEMBERS	GENDER DISTRIBUTION	
		MALE 14,312 (69.95%) FEMALE 6,148 (30.05%) NON BINARY 1 (0.00%) PREFER NOT TO ANSWER 0 (0.00%)	
DROPPED MEMBERS		CLICK HERE FOR CUMULATIVE MEMBERSHIP DATA	TOTAL FAMILY UNIT MEMBERS 4,001
DECEASED 88 CLUB CANCELLED 9 OTHER 425 TOTAL 522			FAMILY MEMBERS PAYING HALF DUES 2,039